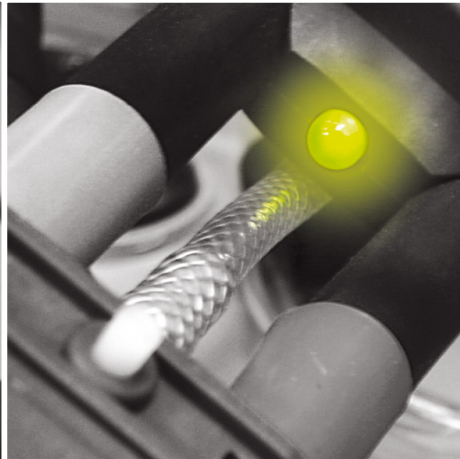


**TRACTION
BATTERIES**

ACCESSORIES



CABLE CONNECTORS

35 mm²

Catalogue Nº K 10060

IDENT	LENGTH
627948	75 mm
627946	85 mm
627947	95 mm
627949	110 mm
628302	130 mm
927771	150 mm
628303	165 mm
627965	170 mm
628306	190 mm
628358	220 mm
628304	250 mm
8366945	270 mm
8356696	300 mm
628308	320 mm
630095	350 mm

50 mm²

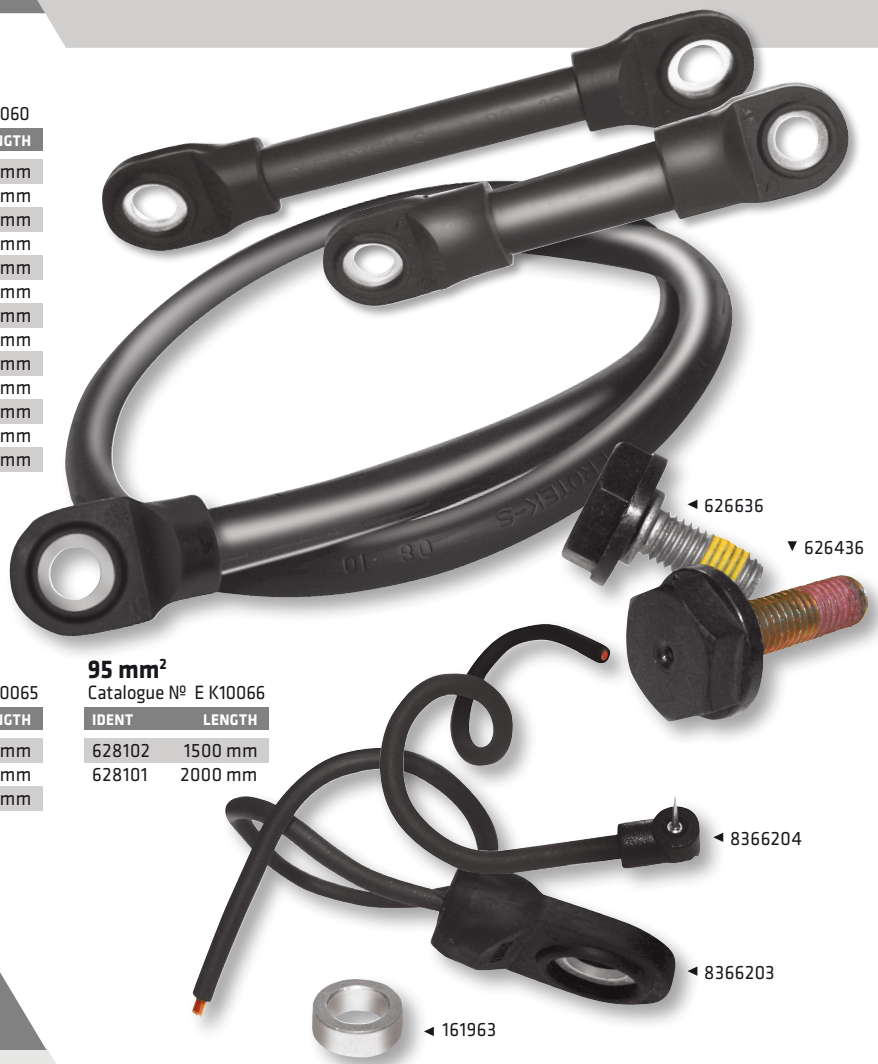
Catalogue Nº K 10060

IDENT	LENGTH
402390	75 mm
402391	85 mm
627943	95 mm
627944	110 mm
402408	130 mm
627953	145 mm
628999	150 mm
627850	165 mm
627799	170 mm
627851	190 mm
627852	200 mm
628307	220 mm
627854	250 mm
8366946	270 mm
6130526	300 mm
627853	325 mm
630096	350 mm

70 mm²

Catalogue Nº K 10060

IDENT	LENGTH
6131859	85 mm
402341	95 mm
627952	110 mm
402337	130 mm
628310	150 mm
402379	165 mm
999666	170 mm
628311	190 mm
628312	200 mm
727952	220 mm
628313	250 mm
6127470	300 mm
628314	350 mm



CABLE END CONNECTORS

35 mm² *E K10060/1

Catalogue Nº E K10065

IDENT	LENGTH
8361868*	1000 mm
402352	1200 mm
627971	1500 mm
627960	2000 mm
8366790*	900 mm

50 mm²

Catalogue Nº E K10065

IDENT	LENGTH
8354335	1000 mm
402385	1500 mm
8360081	1600 mm
627961	2000 mm

70 mm²

Catalogue Nº E K10065

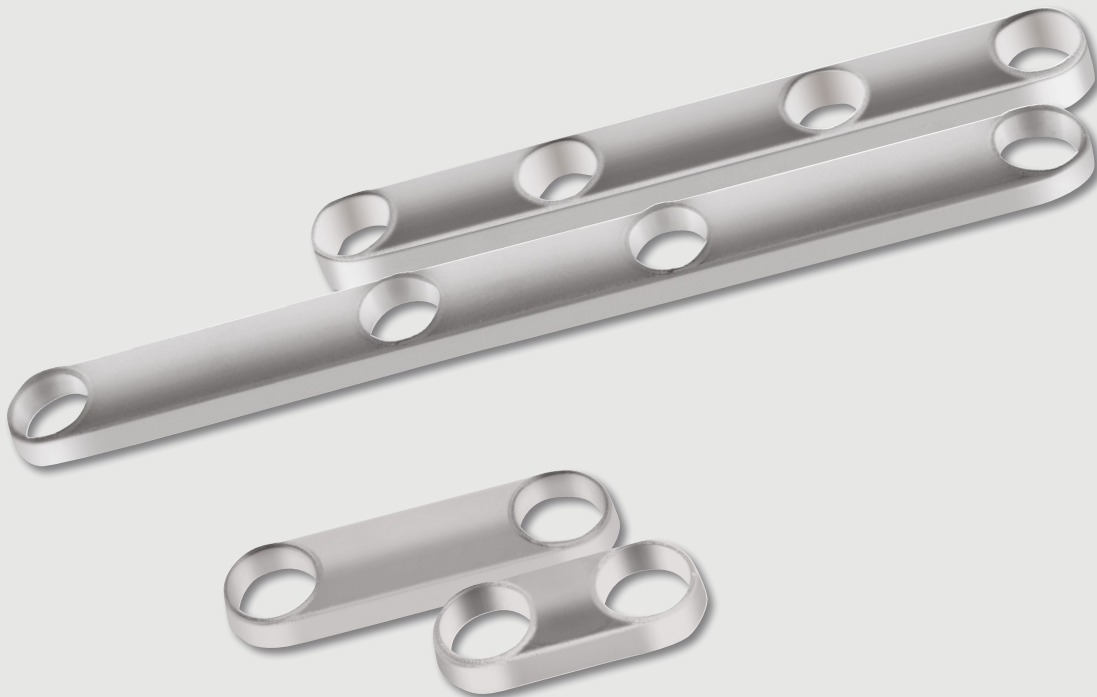
IDENT	LENGTH
402380	1500 mm
8360284	1600 mm
626001	2000 mm

95 mm²

Catalogue Nº E K10066

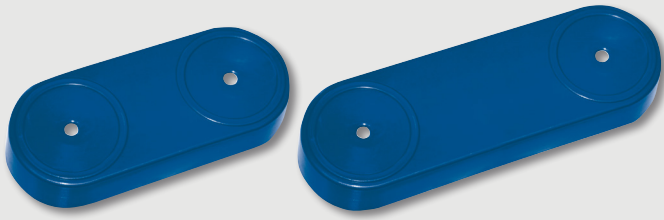
IDENT	LENGTH
628102	1500 mm
628101	2000 mm

LEAD CONNECTORS



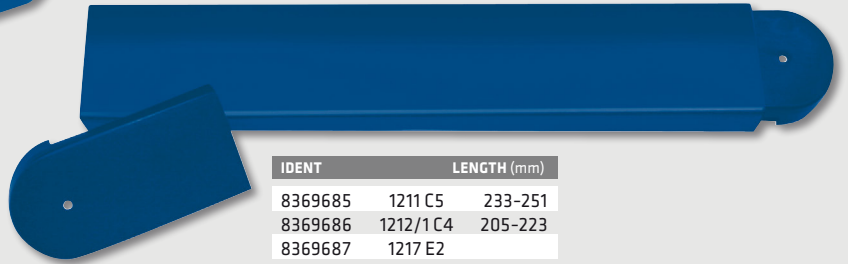
IDENT	LENGTH
335942	44 mm
359336	46 mm
6123920	62 mm
335940	64 mm
335941	68 mm
358952	74 mm
8356907	77 mm
358976	82 mm
358988	85 mm
359002	90 mm
359026	95 mm
359038	100 mm
359051	108 mm
8363781	114 mm
633781	120 mm
359063	125 mm
631747	130 mm
6131574	135 mm
603226	141 mm
6131573	151 mm
625061	205 mm
359361	215 mm
625048	223 mm
625036	233 mm
405630	240 mm
625024	241 mm
319857	250 mm
625085	251 mm
405631	269 mm
319856	279 mm
627207	286 mm
504370	296 mm
8362951	303 mm
8363625	313 mm

PROTECTIVE CAPS



IDENT	LENGTH (mm)
8369389	46
8369390	64
8369391	70
8369392	74
8369393	77
8369394	85
8369395	90
8369396	95
8369397	100

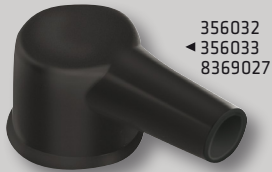
IDENT	LENGTH (mm)
8369398	108
8369399	114
8369400	120
8369401	125
8369402	130
8369403	141
8369404	151
8369405	240-313



IDENT	LENGTH (mm)
8369685	1211 C5 233-251
8369686	1212/1C4 205-223
8369687	1217 E2



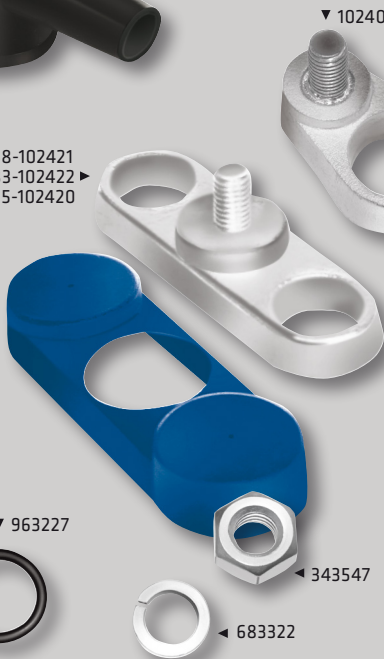
END CONNECTORS



356032
 ◀ 356033
 8369027

M10×68-102421
 M10×83-102422
 M10×95-102420

8354458
 8354459 ▶
 8354460



▼ 963227

▼ 102401

▼ 626637

405228 ⊕
 405229 ⊖

▲ 605581

▲ 405226

▲ 140402 ⊕
 140403 ⊖

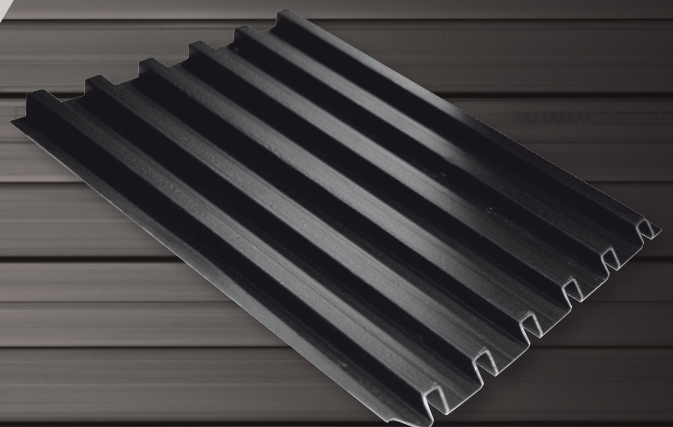
▲ 343547

◀ 683322

▲ 405224
 ▲ 405225

IDENT	CONTENT
405230	140401 + 405228 + 405224 + 405226 + 605581
405231	140400 + 405229 + 405225 + 405226 + 605581
8364212	356033 + 626637 + 343547 + 963227 + 683322
8364262	356032 + 102421 + 8354458 + 343547 + 683322

RIBBED PLATES



IDENT	L×W×H (mm)
8367277	234×185×1
8367280	234×185×10
8367278	234×185×3
8367279	234×185×5
8367292	334×198×10
8367290	334×198×3
8367291	334×198×5
8367297	396×198×10
8367295	396×198×3
8367296	396×198×5

IDENT	L×W×H (mm)
8367300	466×198×10
8367478	466×198×20
8367298	466×198×3
8367299	466×198×5
8367303	508×198×10
8367301	508×198×3
8367302	508×198×5
8367306	540×198×10
8367304	540×198×3

IDENT	L×W×H (mm)
8367305	540×198×5
8367309	564×198×10
8367307	564×198×3
8367308	564×198×5
8369057	694×198×10
8368599	694×198×5
8367312	714×198×10
8367310	714×198×3
8367311	714×198×5

PLUGS WITH BASKET

Logo
with logo TAB (black)

IDENT	HEIGHT
8366545	46 mm
8366094	51,5 mm
8366093	63,5 mm

Blank
complete

IDENT	HEIGHT
8365135	46 mm
8365134	51,5 mm
8365133	63,5 mm



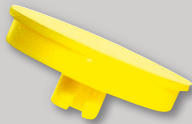
PLUGS & TRANSPORT PLUGS



8369204



407251



407056



316224



316223



316220

TUBES FOR AIR MIXING

AIRMATIC



771641



357990



402404

AQUAMATIC



831877

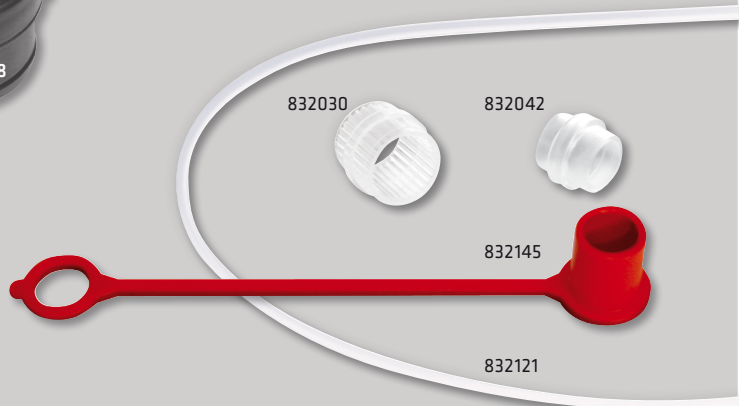
831878

831875

IDENT	HEIGHT
831907	14 mm
834233	20 mm
834250	24 mm
831931	29 mm
834239	34 mm
831906	39 mm



832091



832030

832042

832145

832121

832017

831992

832078

832054

831980

832029

832079



832108



831967



831979



831955



831943

ELECTRICAL PLUGS & CABLES

DIN CONNECTORS

8355724	80 A (95214-00) M
8355673	160 A (95016-01) F
8355674	160 A (95043-01) F
8355723	320 A (95520-01) M
8355671	320 A (95620-05) F
8355672	80 A (NR.95309-01) F
8357514	80 A (NR.95342-01) F

SBX CONNECTORS

8356773	350 A BLUE
8359307	350 A RED
6123928	350 A GREY
8357968	350 A GREEN

SR CONNECTORS

8366944	50 A BLACK
816778	50 A RED
816678	50 A GREY
403555	175 A BLUE
8353964	175 A RED
816985	175 A GREY
403155	350 A BLUE
8355966	350 A RED
504155	350 A GREY

SRE CONNECTORS

816984	160 A BLACK
816679	160 A BLUE E
816980	160 A RED
8357826	160 A YELLOW
816983	160 A GREY
8353238	160 A GREEN
816693	320 A BLACK
816690	320 A BLUE
816691	320 A RED
816694	320 A GREY
816692	320 A GREEN

FT CONNECTORS

8353139	80 (81216-00) F
8352250	80A E81221-00

HANDLES

8364122	160/320 A REMA (95066-93)
8364123	80 A REMA (95244-01)
816779	FOR CONNECTOR AND. 160 (E78291-04)
816780	FOR CONNECTOR AND. 320 (E78297-04)
8353324	FOR CONNECTOR AND. 50 (E78295-00)



WATERING MONITOR



CAPACITIVE BATTERY ELECTROLYTE LEVEL SENSOR

which with clearly visible green light indicates electrolyte at proper specified level. Flashing red light indicates that the electrolyte level is below minimum and battery needs to be refilled with demineralised water to avoid permanent damage of the battery.

8364876

Battery application. Traction batteries TAB of type EPzS and PzB are appropriated for propulsion of different electrical machines (forklifts, mine locomotives, etc.).

One of the very important production part of your company is internal logistics. We are introducing our traction batteries TAB which have been satisfying the most demanding users for more than half a century. **Batteries are known by their: high capacity, long life-time, resistance to vibrations, short charging times, low consumption of distilled water, simple maintenance.**

We assemble individual cells (2V) into batteries with different voltages, capacities and dimensions which suite to all types of electrical machines. Wide production program covers the range of DIN (EPzS) and BS (PzB) cells according to EN60254 - 1,2 and IEC 254 - 1,2.

WE PRODUCE BATTERIES / CELLS IN WELDED AND BOLTED VERSION



BOTH VERSIONS ARE BEING MANUFACTURED:

- + **DRY-CHARGED VERSION:** a battery / cell have to be filled up with an electrolyte and supplementary charged before use. The Plates are already formed and in special process protected against oxidation. They can be stored up to two years.
- + **ELECTROLYTE-CHARGED:** a battery / cell can be installed immediately, because it is already filled up with electrolyte and electrically charged as well.



SERVICE department

T: +386 (0)2 8700 231, +386 (0)2 8700 233, F: +386 (0)2 8700 234

TAB d.d. | Polena 6, SI-Mežica 2392, Slovenia | www.tab.si

Energy in moti